

A Millennium of Monochromes
From the Great Tang to the High Qing
The Baur and Zhuyuetang Collections

From 27 September 2018 to 3 February 2019

CAPTIONS



1.

Cup stand

Porcelain with transparent glaze
Xing kilns (Hebei Province), Tang dynasty, 8th century
H. 2.5 cm, D. 10.7 cm

© Zhuyuetang Collection, photo Barry Lui



2.

“Mallet” (*kinuta*) vase with handles in the form of fish
Stoneware with a celadon glaze
Longquan kilns (Zhejiang Province)
Song or Yuan dynasty, 13th-14th century
H. 24 cm, W. 11 cm

© Zhuyuetang Collection, photo Barry Lui



3.

Stand with crackle glaze

Guan or Ge Kilns, Zhejiang Province. Southern Song dynasty, 12th-13th century
H. 11.5 cm, d. 15 cm. CB.CC.1932.92

© Baur Foundation, Museum of Far Eastern Art, photo Marian Gérard



4.

“Monk’s cap” ewer with *anhua* decoration of lotus sprays
and the Eight Buddhist Emblems

Porcelain and “sweet white” glaze

Ming dynasty, Yongle period and reign mark (r. 1403-1424)

H. 20.2 cm, W. 18.2 cm

© Zhuyuetang Collection, photo Barry Lui



5.

Bell-shaped cup

Porcelain and blue cobalt-oxide glaze

Ming dynasty, Jiajing period and reign mark (1522–66)

H. 8 cm, D. 11.9 cm

© Zhuyuetang Collection, photo Barry Lui



6.

Dish with clouds and dragons
Porcelain with copper-red glaze
Ming dynasty, reign of Hongwu (r. 1368-1398)
H. 3.8 cm, D. 19.4 cm
© Zhuyuetang Collection, photo Barry Lui



7.

Large bowl
Porcelain with white glaze
Ming dynasty, Chenghua period and reign mark (r. 1465-1487)
H. 9.3 cm, D. 20.5 cm
© Zhuyuetang Collection, photo Barry Lui



8.

Dish

Porcelain with translucent glaze and pale yellow enamel
Ming dynasty, Hongzhi period and reign mark (r. 1488-1505)
H. 4.3 cm, D. 21.1 cm

© Zhuyuetang Collection, photo Barry Lui



9.

Two-handle *xizun* ritual jar with an animal similar to an ox
Porcelain with blue cobalt-oxide glaze
Ming dynasty, Jiajing period and reign mark (r. 1522-1566)
H. 25,8 cm, D. 27 cm. CB.CC.1944.168

© Baur Foundation, Museum of Far Eastern Art, photo Marian Gérard



10.

Miniature pot in a shape of a garden seat

Porcelain with celadon glaze

Qing dynasty, Qianlong period and reign mark (r. 1736-1795)

H. 16 cm, W. 15 cm

© Zhuyuetang Collection, photo Barry Lui



11.

Vase with floral scroll

Porcelain with light blue glaze

Qing dynasty, Kangxi period and reign mark (r. 1662-1722)

H. 31,8 cm ; d. 12 cm. CB.CC.1933.328

© Baur Foundation, Museum of Far Eastern Art, photo Marian Gérard



12.

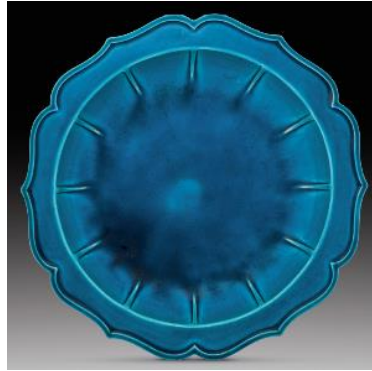
Bowl with incised dragons

Porcelain with pale aubergine glaze

Qing dynasty, Kangxi period and reign mark (1662-1722)

H. 7,2 cm ; d. 15,2 cm

© Zhuyuetang Collection, photo Barry Lui



13.
Multi-lobed basin
Porcelain with turquoise glaze
Qing dynasty, Yongzheng period (r. 1723-1735)
H. 6,5 cm, D. 23,2 cm
© Zhuyuetang Collection, photo Barry Lui



14.
Covered bowl
Porcelain with ruby red glaze
Qing dynasty, Qianlong period and reign mark (r. 1736-1795)
H. 8,5 cm ; d. 11 cm
© Zhuyuetang Collection, photo Barry Lui



15.
Tripod censer
Porcelain with coral red glaze
Qing dynasty, Yongzheng period and reign mark (r. 1723-1735)
H. 5,2 cm, D. 7,7 cm
© Zhuyuetang Collection, photo Barry Lui



16.

Vase with "peach bloom" glaze and a green enameled dragon

Qing dynasty, Kangxi period and reign mark (r. 1662-1722)

H. 19,9 cm ; d. 8 cm .CB.CC.1996.668

© Baur Foundation, Museum of Far Eastern Art, photo Marian Gérard



17.

Meiping vase with mottled glaze

Qing dynasty, Yongzheng period and reign mark (r. 1723-1735)

H. 28,5 cm ; l. 16 cm

© Zhuyuetang Collection, photo Barry Lui



18.

Dish moulded in the shape of a chrysanthemum

Porcelain with green glaze

Qing dynasty, Yongzheng period and reign mark (r. 1723-1735)

H. 3,8 cm ; 17,5 cm .CB.CC.1930.496

© Baur Foundation, Museum of Far Eastern Art, photo Marian Gérard



19.

Vase in archaistic *Gu* form

Porcelain covered with polished gilding

Qing dynasty, Qianlong period and reign mark (r. 1736-1795)

H. 28 cm ; d. 19 cm .CB.CC.1935.650

© Baur Foundation, Museum of Far Eastern Art, photo Marian Gérard



20.

Stem dish

Porcelain with translucent glaze and lemon yellow enamel

Qing dynasty, Qianlong period and reign mark (r. 1736-1795)

H. 8,3 cm ; d. 16,9 cm

© Zhuyuetang Collection, photo Barry Lui



21.

Portrait of Emperor Qianlong (1711-1799)

Charles-Eloi Asselin (1743-1804) after a watercolour by Giuseppe Panzi (1734-after 1792)

Porcelaine plaque

Musée des châteaux de Versailles et de Trianon

© RMN-Grand Palais (Château de Versailles) / Michèle Bellot



22.

Portrait of a concubine

Ulanara (1718–1766), second wife of Emperor Qianlong

Attributed to Jean-Denis Attiret (1702-1768)

Oil on paper, 1750-1760

Musée des Beaux-Arts de Dole

© Musée des Beaux-Arts de Dole, photo Jean-Loup Mathieu